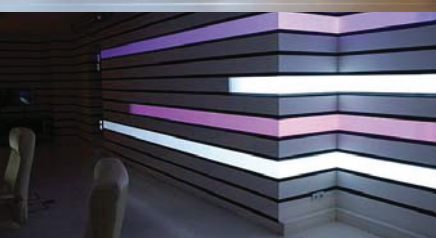
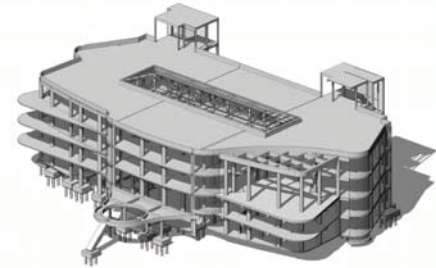


ACERTS HEAVY CONSTRUCTION

Government Construction Services | Commercial Construction | Restaurant Construction | Construction Management | Consulting Services

Capability Statement



Government Business POC
Mayier Kahn Ph.D. P.E.
 E-mail: mayier.kahn@aircraftcerts.com
 Phone: (866)225-1071
 Direct: 817-584-2763
DUNS: 078764780
CAGE: 71GT2

Corporate Head Office
 Downtown Republic Center
 325 N. St. Paul Street
 Suite 3100
 Dallas, Texas 75201

Windmill Repairs
 16767 Serrano Street
 Mojave, CA 93501

Engine/Composite Manufacturing Division
 518 48 Wood Ward Avenue
 Pontiac Michigan 48342

Research and Development SSG and Sensors
 125 Cambridge Park Drive
 Suite 301
 Cambridge, MA 02140 USA

NORTH AMERICAN INDUSTRY CLASSIFICATION SYSTEM (NAICS)

- 541310 - Architectural Services
- 237990 - Other Heavy and Civil Engineering Construction
- 236220 - Commercial and Institutional Building Construction
- 237110 - Water and Sewer Line and Related Structures Construction
- 237120 - Oil and Gas Pipeline and Related Structures Construction
- 237130 - Power and Communication Line and Related Structures Construction
- 237310 - Highway, Street, and Bridge Construction
- 325180 - Other Basic Inorganic Chemical Manufacturing
- 488190 - Other Support Activities for Air Transportation
- 541513 - Computer Facilities Management Services
- 561210 - Facilities Support Services

Acerts Inc. is the ideal selection as your General Contractor – Or partner, for your next project.

Acerts structural engineering experience includes mild reinforced concrete, post-tensioned concrete, precast concrete, structural steel, timber and masonry. Our history of successful projects allows us to deliver economical and architecturally elegant structural designs for your project. Our architecture is driven by a belief that the quality of our surroundings has a direct influence on the quality of our lives, whether at home, in the workplace, the cultural building or the public realm. The same thinking applies at the larger scale of infrastructure, whether that is an airport, a metro system, a city center or a regional plan. Acerts provides a range of civil engineering, traffic and transportation engineering, MEP engineering, and related consulting services for infrastructure, High rise building, single family, multi-family, commercial, and mixed use site and land development projects throughout Texas. Our clients include private and public sector project owners. Acerts Inc. is your team of professional civil engineers, mechanical engineers, electrical engineer, plumbing designers, traffic consultants, transportation engineers, certified land planners, and land use consultants has decades of combined market-leading experience. Your project needs Mechanical, Electrical, and Plumbing Engineers who have done this before. Our MEP team has completed the HVAC, electrical, and plumbing design for hundreds of multi-family buildings, commercial office developments, hotels, and healthcare facilities. Acerts inc. is your mitigating traffic impacts and ensuring adequate access for the traveling public is increasingly critical to the success of today's urban environments. Our focus in traffic and transportation engineering brings valuable solutions to state and local government agencies and private clients as our region faces the challenges of growth, environmental responsibility, and smart mobility.

STANDARD INDUSTRIAL CLASSIFICATION (SIC)

- 1541 Industrial Buildings and Warehouses
- 1542 Non Residential Construction, NEC
- 1611 Highway and Street Construction
- 1771 Concrete Work
- 1794 Excavation Work
- 3271 Concrete Block Brick

SERVICES

- Scheduling
- Construction Management
- Construction Supervision
- Cost Estimating
- Value Engineering
- Architectural Services
- Engineering Services
- Electrical Engineering Services
- Mechanical Engineering Services
- Code Compliance Consulting
- Inspection Services
- IT Consulting

CERTIFICATES

SBA Small Business Certifications (8A)

- Minority Owned Business
- Joint Venture Women Owned Small Business
- Joint Venture Economically Disadvantaged Women Small Owned Business
- Veteran Owned Business
- Community Development Corporation Owned Firm
- Service Disabled Veteran Owned Business